



KYOTO UNIVERSITY

Facts and Figures

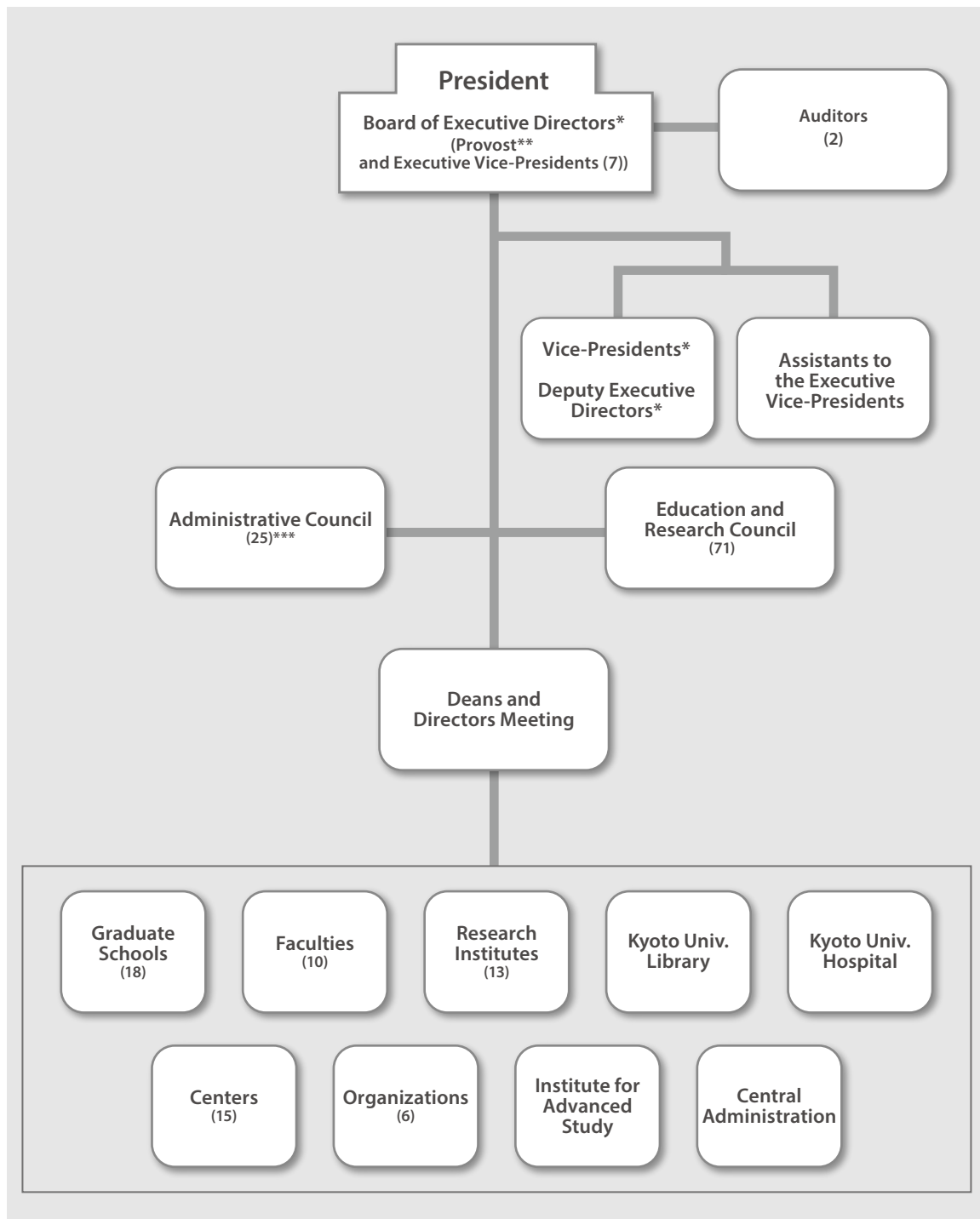
2017–2018

CONTENTS

Organizational Structure	1
Staff and Students	2
Finance	3
Industry-Academia Collaboration	4
University Facilities	6
Academic Exchange Memoranda	7
Overseas Offices and Facilities	11
Researchers from Abroad	13
Researchers going Abroad	14
Students from Abroad	15
Students going Abroad	17

Organizational Structure

(As of Oct. 1, 2017)



* Each of the (executive) vice-presidents and deputy executive directors is in charge of a different area of university affairs.
 ** One executive vice-president also serves as provost.
 *** 25 members, 12 of whom are Kyoto University faculty and staff.

Staff and Students

University Faculty and Staff

(As of May 1, 2017)

Position	Number				Total	
	Permanent		Fixed Term			
President	1	–	–	–	1	–
Executive Directors	7	–	–	–	7	–
Auditors	2	–	–	–	2	–
Professors	1,000	(17)	93	(40)	1,093	(57)
Associate Professors	782	(55)	169	(34)	951	(89)
Senior Lecturers	162	(21)	69	(21)	231	(42)
Assistant Professors	781	(26)	353	(31)	1,134	(57)
Research Associates	2	–	–	–	2	–
Researchers (Non-teaching)	–		548		548	
Non-teaching Staff	2,773	} (10)	488	} (146)	3,261	} (156)
Specialist Staff	8		69		77	
Total	5,518	(129)	1,789	(272)	7,307	(401)

Number of international faculty and staff shown in parenthesis.

Enrollment

(As of May 1 of each year)

Year	Undergraduate	Graduate	Total
2017	13,360	9,338	22,698
2016	13,511	9,351	22,862
2015	13,569	9,216	22,785
2014	13,580	9,226	22,806
2013	13,585	9,323	22,908

Number of Graduates

Academic Year (Apr. 1–Mar. 31)	Undergraduate	Graduate		Total
		Master's Course	Doctoral Course	
2016	2,963	2,250	665	5,878
2015	2,931	2,149	718	5,798
2014	2,885	2,218	723	5,826
2013	2,891	2,215	674	5,780
2012	2,901	2,134	735	5,770

Number of Degrees Conferred

Academic Year (Apr. 1–Mar. 31)	Master's Degree	Doctoral Degree
2016	2,250	745
2015	2,149	803
2014	2,218	837
2013	2,215	745
2012	2,134	822

Number of Professional Degrees Conferred

Academic Year (Apr. 1–Mar. 31)	Law School	School of Public Health	School of Government	School of Management	Total
2016	133	37	35	78	283
2015	139	34	36	86	295
2014	148	28	47	85	308
2013	153	26	41	90	310
2012	160	28	38	79	305

Finance

Financial Statement

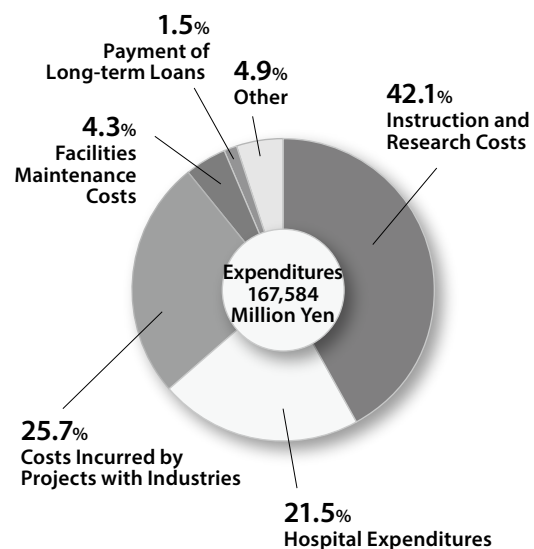
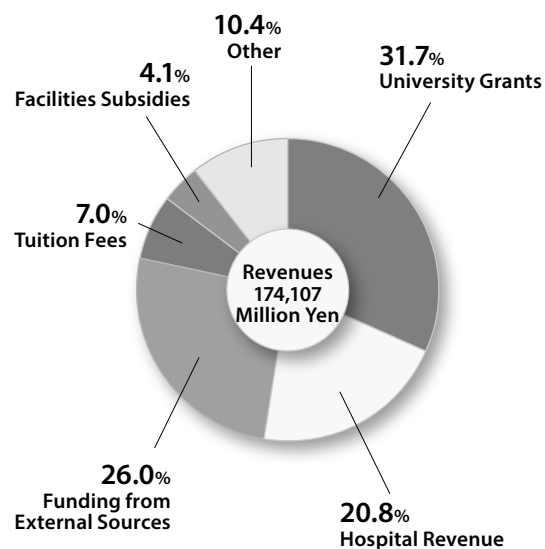
Revenues in Academic Year 2016

Category	(Apr.1-Mar. 31)	
	Million Yen	Million US \$
University Grants	55,222	492.22
Facilities Subsidies	7,126	63.52
Tuition Fees	12,163	108.41
Hospital Revenue	36,276	323.34
Funding from External Sources	45,215	403.02
Other	18,105	161.38
Total	174,107	1551.89

Expenditures in Academic Year 2016

Category	(Apr.1-Mar. 31)	
	Million Yen	Million US \$
Instruction and Research Costs	70,602	629.31
Hospital Expenditures	36,016	321.03
Facilities Maintenance Costs	7,135	63.60
Costs Incurred by Projects with Industries	43,181	384.89
Payment of Long-term Loans	2,463	21.95
Other	8,187	72.97
Total	167,584	1493.75

* Calculations based on the exchange rate as of Mar.31, 2017 (US\$1=¥112.19).



Industry-Academia Collaboration

Invention Disclosure

Academic Year (Apr. 1-Mar. 31)	Number of Invention Disclosure Forms Submitted
2016	370
2015	439
2014	412
2013	393
2012	443
2011	412
2010	396
2009	405

Patent Application and Acquisition

Academic Year (Apr. 1-Mar. 31)	Domestic		Foreign	
	Number of Patent Applications	Number of Patents Issued	Number of Patent Applications ¹	Number of Patents Issued ²
2016	286 (201)	188 (142)	398 (290)	258 (170)
2015	315 (227)	161 (120)	360 (260)	184 (126)
2014	313 (222)	161 (127)	340 (229)	179 (113)
2013	290 (202)	156 (108)	331 (215)	101 (63)
2012	273 (187)	132 (98)	313 (192)	75 (43)
2011	237 (174)	109 (80)	298 (196)	79 (23)
2010	230 (169)	68 (38)	261 (150)	41 (25)
2009	231 (166)	45 (21)	224 (107)	37 (17)

Number of joint applications or co-owned patents shown in parenthesis.

¹ Applications under the Patent Cooperation Treaty etc. count as one, regardless of the number of designated countries.

² The number of patents issued count as one for each country.

Current Number of Patents

(As of Mar. 31, 2017)

Domestic	Foreign
1,007 (661)	868 (555)

Number of joint applications or co-owned patents shown in parenthesis.

Utilization of Intellectual Property

Academic Year (Apr. 1-Mar. 31)	Patents		Copyrights ¹		Research Materials		Total
	Number of Licenses ²	Revenue (Thousand Yen)	Number of Licenses ²	Revenue (Thousand Yen)	Number of Licenses ²	Revenue (Thousand Yen)	Revenue (Thousand Yen)
2016	159	460,036	11	3,120	67	80,347	543,503
2015	144	371,154	11	2,780	53	14,768	388,702
2014	158	357,570	25	8,599	57	16,157	382,326
2013	139	310,530	22	4,515	56	11,901	326,946
2012	115	191,144	16	9,965	32	53,217	254,326
2011	101	184,594	14	4,172	25	18,801	207,567
2010	59	154,575	6	2,182	28	15,865	172,622
2009	58	65,432	8	3,675	46	23,917	93,024

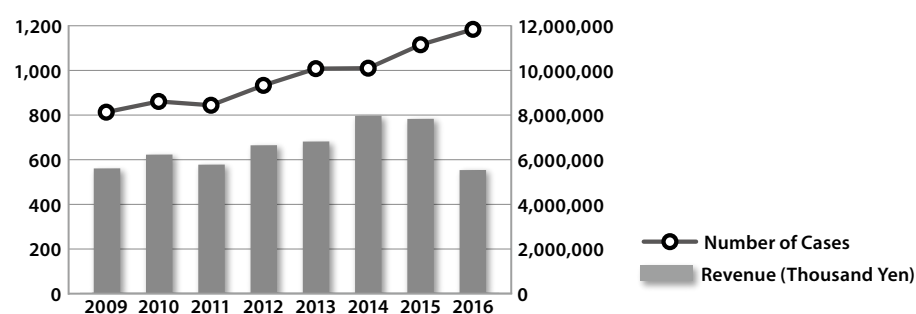
¹ Databases and computer programs or digital content (except research papers, books, or reports)

² Including assignments

University Facilities

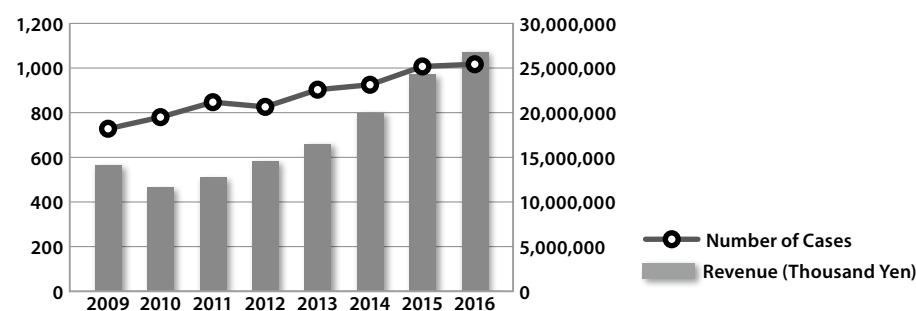
Collaborative Research

Academic Year (Apr. 1–Mar. 31)	Number of Cases	Revenue (Thousand Yen)
2016	1,184	5,540,024
2015	1,115	7,831,464
2014	1,010	7,966,350
2013	1,008	6,817,133
2012	933	6,649,823
2011	844	5,782,291
2010	861	6,231,529
2009	813	5,613,524



Sponsored Research

Academic Year (Apr. 1–Mar. 31)	Number of Cases	Revenue (Thousand Yen)
2016	1,017	26,770,423
2015	1,007	24,296,814
2014	925	19,979,788
2013	903	16,465,535
2012	826	14,574,873
2011	847	12,718,523
2010	780	11,626,147
2009	728	14,137,356



Library Collection

(As of Mar. 31, 2017)

	Number of Books			Number of Magazines and Periodicals		
	Japanese	International	Total	Japanese	International	Total
Main University Library	699,920	280,131	980,051	14,471	9,853	24,324
Other University Libraries	2,998,357	3,028,048	6,026,405	51,299	49,114	100,413
Combined Total	3,698,277	3,308,179	7,006,456	65,770	58,967	124,737

Kyoto University Hospital

Academic Year 2016 (Apr. 1 - Mar. 31)

Number of Beds	Number of Inpatients	Number of Outpatients
1,121	340,085	685,863

Number of Visitors to the Kyoto University Museum

Academic Year 2016 (Apr. 1 - Mar. 31)

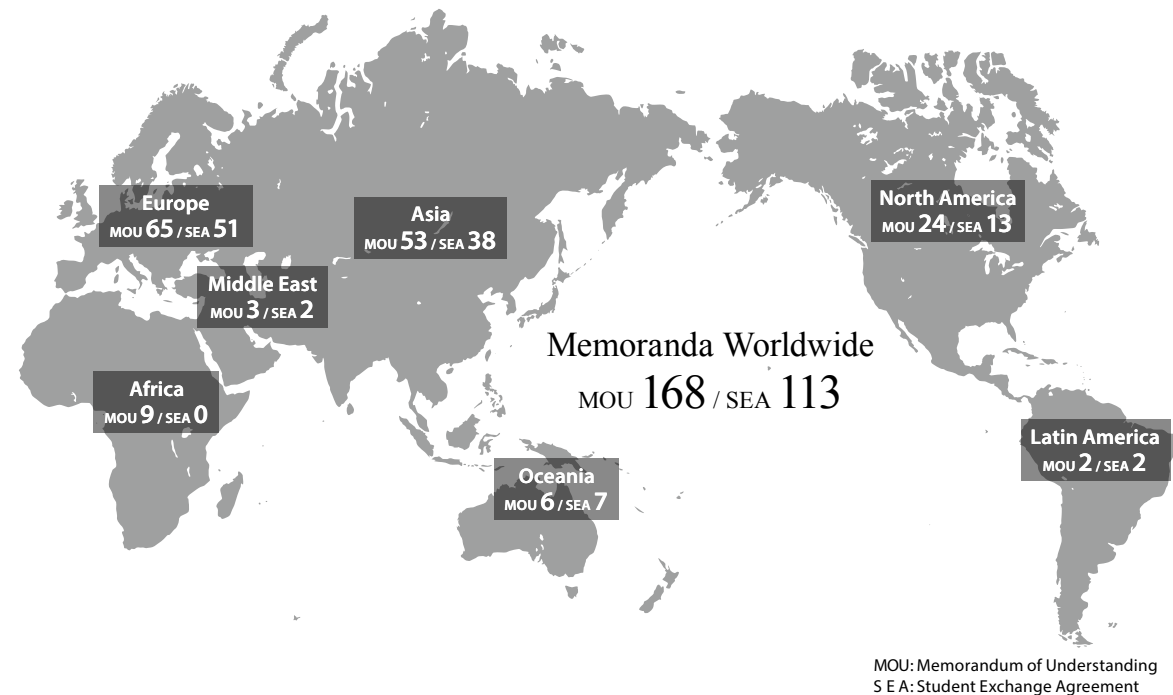
Individuals	Groups	Paying Visitors	Non-Paying Visitors	Total
15,963	494	16,457	24,581	41,038

Number of Visitors to the Seto Marine Biological Laboratory Aquarium

Academic Year 2016 (Apr. 1 - Mar. 31)

Individuals	Groups	Paying Visitors	Non-Paying Visitors	Total
71,346	1,796	73,142	2,193	75,335

Academic Exchange Memoranda



(As of May 1, 2017)

Country/Region	Institution	MOU Year of Conclusion	SEA Year of Conclusion
ASIA			
Bhutan	Royal University of Bhutan	2013	–
Brunei	Universiti Brunei Darussalam	2014	2015
China	Northwest University	1980	–
	Wuhan University	1980	2007
	Peking University	1983	2008
	Tsinghua University	1998	2007
	Fudan University	2002	2007
	Zhejiang University	2003	2008
	University of Science and Technology of China	2005	–
	Hong Kong University of Science and Technology	2005	2006
	Nanjing University	2006	2007
	University of Hong Kong	–	2007
	Chinese University of Hong Kong	–	2007
	Shanghai Jiao Tong University	2008	2008
	Xi'an Jiaotong University	2008	2010
Nankai University	–	2014	
Hong Kong Polytechnic University	–	2017	
India	Banaras Hindu University	2015	2015
	Indian Institute of Technology Bombay (IITB)	2015	–
	Indian Institute of Technology Guwahati (IITG)	2016	2016
	Indian Institute of Technology Kanpur (IITK)	2016	–
Indonesia	Institut Teknologi Bandung	2006	2016
	University of Indonesia	2008	2015
	Gadjah Mada University	2012	2016
	Bogor Agricultural University	2013	–
	Hasanuddin University	2014	–

Country/Region	Institution	MOU Year of Conclusion	SEA Year of Conclusion
Indonesia	Indonesian Institute of Sciences (LIPI)	2014	–
	Center for International Forestry Research (CIFOR)	2016	–
	Agency of Peatland Restoration (Badan Restorasi Gambut)	2016	–
Laos	National University of Laos	2002	–
Malaysia	University of Malaya	2008	2015
	Universiti Teknologi Malaysia	2016	2017
Myanmar	Mandalay Technological University	2013	–
	Yangon Technological University	2013	–
	University of Yangon	2015	–
Nepal	Tribhuvan University	2015	–
Philippines	University of the Philippines	2015	2015
Republic of Korea	Kyungpook National University	1984	1996
	Seoul National University	1991	1997
	Yonsei University	1998	1999
	Korea University	2002	2006
	Korea Advanced Institute of Science and Technology	2005	–
	Pohang University of Science and Technology	2007	2007
	Konkuk University	2012	–
Singapore	National University of Singapore	1999	1999
	Nanyang Technological University	2013	2014
Taiwan	National Taiwan University	2005	2005
	National Tsing Hua University	2006	2007
Thailand	Kasetsart University	1984	2001
	Chulalongkorn University	2005	2006
	Thammasat University	2005	2006
	Mahidol University	2014	–
	Chiang Mai University	2014	2014
Vietnam	Vietnam National University, Hanoi	2007	2012
	Hue University	2007	2016
	Hanoi University of Science and Technology	2009	–
	University of Danang	2014	2016
OCEANIA			
Australia	University of Queensland	1981	2012
	University of Melbourne	1997	1997
	University of New South Wales	1998	1998
	University of Sydney	1999	1999
	Australian National University	2008	2008
New Zealand	University of Auckland	1997	1997
	University of Otago	–	2016
NORTH AMERICA			
Canada	University of Toronto	1991	1997
	La Conference des Recteurs et des Principaux des Universites du Quebec	1994	1998
	University of Waterloo	2003	2006
	McGill University	2014	2014
	University of British Columbia	2014	2015
	Concordia University	2014	2014
United States of America	Wayne State University	1985	–
	Stanford University	1986	–
	University of California	1990	–
	Polytechnic University	1990	–
	Brown University	1992	–
	George Washington University	1998	1998
	Tufts University	1998	–
	University of Illinois at Urbana-Champaign	1999	–
	University of Pennsylvania	1999	2006

Country/Region	Institution	MOU Year of Conclusion	SEA Year of Conclusion	
United States of America	University of Hawai'i	2003	2005	
	University of Michigan	2003	–	
	University of Washington	2011	2011	
	University of California, Davis	2011	–	
	University of Wisconsin-Madison	–	2013	
	University of California, San Diego	2014	–	
	Olin College of Engineering	2014	–	
	University of Notre Dame Du Lac	2014	2016	
	Massachusetts Institute of Technology	2015	–	
	University of California Berkeley	2015	–	
University of Texas at Austin	–	2015		
LATIN AMERICA				
Brazil	University of São Paulo	2014	2014	
Mexico	University of Guadalajara	1983	2006	
EUROPE				
Austria	University of Wien	1993	1997	
Belgium	Université Catholique de Louvain	1997	1997	
Czech Republic	Charles University	1990	–	
Finland	University of Helsinki	2011	2011	
France	Université de Paris 7	1979	2015	
	Université de Strasbourg	1991	2000	
	Le Consortium des Universités de Grenoble	2000	2000	
	École Normale Supérieure	2009	2009	
	Institut d'Etudes Politiques de Paris (Sciences Po)	–	2009	
	Centre National de la Recherche Scientifique	2013	–	
	Université de Bordeaux	2014	2015	
	ITER International Fusion Energy Organization	2014	–	
	Agropolis International	2014	–	
	École des Hautes Études en Sciences Sociales (EHESS)	2015	–	
	Institut National des Langues et Civilisations Orientales (INALCO)	2016	2016	
	MINES ParisTech	2016	2016	
	Germany	Free University of Berlin	1984	1997
Ludwig Maximilians University of Munich		1989	1998	
Rhenish Friedrich Wilhelm University of Bonn		1990	1998	
Rupert Charles University of Heidelberg		1990	1997	
Humboldt University of Berlin		1998	1999	
Technische Universität München		2006	2007	
Georg-August-Universität Göttingen		2011	2011	
Karlsruhe Institute of Technology		2011	2011	
University of Cologne		2013	2017	
RWTH Aachen University		2014	2014	
Berlin University of Technology		2016	2016	
Iceland		University of Iceland	–	2016
Ireland		University College Dublin, UCD National University of Ireland	2014	2014
	University of Dublin, Trinity College Dublin	2014	2014	
Italy	University of Siena	1989	–	
	University of Bologna	1995	–	
	Politecnico di Milano	2014	2014	
	Università Ca' Foscari Venezia	2015	2015	
Luxembourg	University of Luxembourg	2016	2016	
Netherlands	Leiden University	1997	1997	
	Utrecht University	1997	1997	
	University of Groningen	2013	2014	
Norway	Norwegian University of Science and Technology	2014	2014	
Poland	Jagiellonian University	2013	–	

Country/Region	Institution	MOU Year of Conclusion	SEA Year of Conclusion
Russia	Lomonosov Moscow State University	1987	–
	Saint-Petersburg State University	2013	–
Spain	Universidad de Barcelona	2014	2014
	Universitat Autònoma de Barcelona	2017	2017
Sweden	Uppsala University	1997	1997
	Stockholm University	1997	1997
	KTH Royal Institute of Technology	2005	2005
	Lund University	2014	–
Switzerland	Swiss Federal Institute of Technology (ETH Zurich)	1989	–
	University of Lausanne	1997	1999
	University of Zurich	2013	2014
	Ecole Polytechnique Fédérale de Lausanne (EPFL)	2015	2015
Ukraine	National Technical University of Ukraine "Kyiv Polytechnic Institute"	2013	–
	Taras Shevchenko National University of Kyiv	2014	–
United Kingdom	University of Sussex	1989	2016
	University of Oxford	1991	–
	University of Cambridge	1997	–
	University of Nottingham	1999	–
	University of Edinburgh	2005	2011
	University of Sheffield	2006	2006
	University of Manchester	2006	2007
	University of Bristol	2011	2012
	Institute of Education University of London	2011	–
	Newcastle University	–	2011
	University of Southampton	–	2012
	University of Glasgow	2013	2015
	King's College London (KCL)	2014	2014
University of Birmingham	2015	2011	
University of Leeds	2016	2016	
MIDDLE EAST			
Israel	Tel Aviv University	1999	2006
Saudi Arabia	King Abdulaziz University (KAU)	2014	–
Turkey	Koç University	2011	2011
AFRICA			
Botswana	University of Botswana	2012	–
Democratic Republic of the Congo	University of Kinshasa	2015	–
Egypt	Egyptian Academy of Science, Research and Technology	2010	–
	Egypt-Japan University of Science and Technology (E-JUST)	2012	–
Ghana	University of Ghana	2017	–
Guinea	University of Conakry	2013	–
Morocco	Mohammed V University of Rabat	2016	–
Sudan	University of Khartoum	2001	–
Uganda	Makerere University	2015	–
Others			
	ASEAN University Network (AUN)	2009	–
	ASEAN+3 University Network (ASEAN+3 UNet)	2012	–
	United Nations University	2005	–
	Japan International Cooperation Agency	2010	–
	United Nations Development Programme (UNDP)	2016	–
	Food and Agriculture Organization of the United Nations (FAO)	2016	–
Total		168	113

Many of Kyoto University's individual faculties, graduate schools, institutes, and centers also have direct cooperation and exchange agreements with institutions around the world. Details are available online at: www.oc.kyoto-u.ac.jp/agreement/en/list

Overseas Offices and Facilities

Overseas Branch Offices

(As of Jul. 1, 2017)

Name	Country	City	Year Established
European Center	Germany	Heidelberg	2014
ASEAN Center	Thailand	Bangkok	2014

Overseas Offices and Facilities

(As of May 1, 2017)

Affiliation	Name	Country	City	Year Established
Graduate School of Economics	Kyoto University - Renmin University Joint Research Center	China	Beijing	2008
Graduate School of Science	Satellite Office at Chulalongkorn University	Thailand	Bangkok	2004
	Research Base for Biodiversity of African Tropical Forest	Gabon	Libreville	2009
Graduate School of Science, Observatories	CHAIN Peru Station	Peru	Ica	2010
Graduate School of Engineering	Kyoto University-Tsinghua University Cooperative Research and Education Center for Environmental Technology	China	Shenzhen	2005
	Global Center of Excellence Kyoto University - Institut Teknologi Bandung for GCOE Joint Research and Education Center	Indonesia	Bandung	2008
	Kyoto University-University of Malaya Overseas Base in Malaysia for Education and Research	Malaysia	Kuala Lumpur	2010
Graduate School of Agriculture	Japanese Research-Team Laboratory, Kinabalu Park Headquarters	Malaysia	Kota Kinabalu	1995
	Japanese Research-Team Laboratory, Deramakot Forest Reserve	Malaysia	Sandakan	2003
	Khon Kaen Research Office of the Graduate School of Agriculture, Kyoto University	Thailand	Khon Kaen	1996
	Kyoto University Research Office at Kasetsart University	Thailand	Bangkok	2014
	Overseas Office of Graduate School of Agriculture, Kyoto University at NTU	Taiwan	Taipei	2015
Graduate School of Agriculture/Graduate School of Global Environmental Studies	Kyoto University Satellite Office at Bogor Agricultural University	Indonesia	Bogor	2015
Graduate School of Asian and African Area Studies/Center for Southeast Asian Studies	Cambodia Field Station	Cambodia	Phnom Penh	2010
	Makassar Field Station	Indonesia	Makassar	2003
	Pekanbaru Field Station	Indonesia	Pekanbaru	2010
	Laos Field Station	Laos	Vientiane	2002
	Myanmar Field Station	Myanmar	Yangon, Yezin	2003
Graduate School of Asian and African Area Studies/Center for African Area Studies	Cameroon Field Station	Cameroon	Ndongo Village, Yaounde	2003
	Ethiopia Field Station	Ethiopia	Addis Ababa, Jinka	2003
	Nairobi Field Station	Kenya	Nairobi	2003
	Namibia Field Station	Namibia	Windhoek	2008
	Niger Field Station	Niger	Niamey	2012
	Tanzania Field Station	Tanzania	Dar-es-Salaam	2003
	Zambia Field Station	Zambia	Lusaka	2003

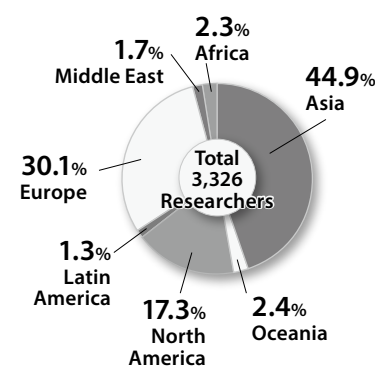
Affiliation	Name	Country	City	Year Established	
Graduate School of Global Environmental Studies	Hue Kyoto University GSGES Office	Vietnam	Hue	2006	
	Hanoi Kyoto University GSGES Office	Vietnam	Hanoi	2008	
	Mahidol Kyoto University GSGES Office	Thailand	Bangkok	2016	
Graduate School of Global Environmental Studies/Graduate School of Engineering	Danang Kyoto University GSGES Office	Vietnam	Da Nang	2006	
Institute of Advanced Energy	Thai Research Station Collaborative Research Laboratory	Thailand	Pathum Thani	2003	
	JASTIP Energy & Environment Joint Laboratory	Thailand	Pathum Thani	2016	
	JASTIP Energy & Environment Joint Laboratory	Thailand	Bangkok	2016	
Research Institute for Sustainable Humankind	Equatorial Atmosphere Radar	Indonesia	Bukittinggi	2001	
	RISH-RDUB Satellite Office	Indonesia	Bogor	2004	
	MHP Acacia Research Office	Indonesia	Muara Enim	2005	
	JASTIP Bioresources & Biodiversity Joint Laboratory	Indonesia	Bogor	2016	
Disaster Prevention Research Institute	JASTIP Disaster Prevention Joint Laboratory	Malaysia	Kuala Lumpur	2016	
	JASTIP Disaster Prevention Joint Laboratory	Vietnam	Hanoi	2016	
	JASTIP Disaster Prevention Joint Laboratory	Vietnam	Ho Chi Minh	2016	
Primate Research Institute	Orangutan Rehabilitation Project	Malaysia	Bukit Merah	2011	
	Research Project on Bonobos in the Luo Reserve	Democratic Republic of the Congo	Djolu	1973	
	Bossou-Nimba Research Station	Guinea	Bossou	1976	
	Kalinzu Forest Research Project by the Primate Research Institute	Uganda	Bushenyi	1997	
Center for Southeast Asian Studies	Jakarta Liaison Office	Indonesia	Jakarta	1970	
	Bangkok Liaison Office	Thailand	Bangkok	1963	
	JASTIP Core Center (Main Office)	Thailand	Pathum Thani	2016	
	CSEAS Lima Office	Peru	Lima	2006	
Center for Ecological Research	Field Station for Tropical Forest and Biodiversity Studies	Malaysia	Miri	1991	
Wildlife Research Center	Kuala Sungai Danum Research Station	Malaysia	Danum Valley	2010	
	Portugal Research Station	Portugal	Viana do Castelo	2016	
	D/R Congo Research Station	Democratic Republic of the Congo	Mbali	2016	
	Ghana Research Station	Ghana	Accra	2009	
	Kyoto University African Ape Expedition	Tanzania	Kigoma	1965	
	African Anthropological and Biological Field Research Center	Tanzania	Arusha	2006	
	Tanzania Research Station	Tanzania	Dar-es-Salaam	2014	
	Office of Society-Academia Collaboration for Innovation	Kyoto University Liaison Office at Tsinghua University	China	Beijing	2006
	International Strategy Office/Research Promotion Department	Kyoto University San Diego Liaison Office	United States of America	San Diego	2017

Researchers from Abroad

Academic Year 2015 (Apr. 1-Mar. 31)

Country/Region	Number of Researchers	Country/Region	Number of Researchers
ASIA			
Bangladesh	15	Albania	1
Bhutan	16	Austria	15
Brunei	4	Belgium	19
Cambodia	14	Bulgaria	1
China (including HK and Macau)	371	Croatia	5
India	105	Czech Republic	15
Indonesia	134	Denmark	14
Laos	15	Estonia	1
Malaysia	55	Finland	23
Mongolia	2	France	263
Myanmar	26	Georgia	1
Nepal	11	Germany	186
Pakistan	3	Greece	5
Philippines	38	Hungary	7
Republic of Korea	245	Iceland	5
Singapore	56	Ireland	5
Sri Lanka	7	Italy	60
Taiwan	164	Kazakhstan	1
Thailand	133	Luxembourg	2
Timor-Leste	1	Netherlands	26
Vietnam	79	Norway	7
OCEANIA			
Australia	64	Poland	16
New Zealand	15	Portugal	4
Vanuatu	2	Romania	4
NORTH AMERICA			
Canada	80	Russia	20
United States of America	496	Serbia	4
LATIN AMERICA			
Argentina	1	Slovakia	2
Brazil	18	Slovenia	2
Chile	6	Spain	38
Colombia	5	Sweden	27
Guatemala	2	Switzerland	39
Mexico	7	Ukraine	3
Peru	2	United Kingdom	176
Uruguay	1	Uzbekistan	4
MIDDLE EAST			
Afghanistan	1		
Bahrain	1		
Iran	16		
Iraq	1		
Israel	19		
Jordan	1		
Lebanon	1		
Oman	1		
Saudi Arabia	5		
Turkey	9		
United Arab Emirates	1		

Country/Region	Number of Researchers
AFRICA	
Algeria	2
Benin	2
Burundi	1
Cote d'Ivoire	1
Democratic Republic of the Congo	4
Egypt	29
Ethiopia	3
Ghana	4
Kenya	2
Libya	1
Madagascar	3
Nigeria	2
Republic of South Africa	9
South Sudan	1
Tanzania	6
Tunisia	1
Uganda	3
Zimbabwe	1
OTHERS	
Others	1
Total	3,326



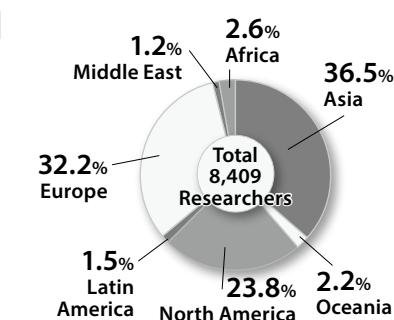
Researchers going Abroad

Academic Year 2015 (Apr. 1-Mar. 31)

Country/Region	Number of Researchers
ASIA	
Bangladesh	38
Bhutan	29
Brunei	2
Cambodia	39
China (including HK and Macau)	688
India	148
Indonesia	271
Laos	33
Malaysia	186
Maldives	1
Mongolia	11
Myanmar	97
Nepal	35
Pakistan	3
Philippines	75
Republic of Korea	398
Singapore	159
Sri Lanka	12
Taiwan	353
Thailand	347
Vietnam	146
OCEANIA	
Australia	141
Fiji	2
Micronesia	3
New Zealand	28
Papua New Guinea	1
Solomon	6
Vanuatu	4
Others (Oceanian Region)	2
NORTH AMERICA	
Canada	150
United States of America	1,850
LATIN AMERICA	
Argentina	8
Brazil	52
Chile	24
Colombia	2
Costa Rica	1
Ecuador	1
Jamaica	2
Mexico	13
Panama	3
Paraguay	3
Peru	14
Uruguay	1
Venezuela	1

Country/Region	Number of Researchers
EUROPE	
Austria	99
Azerbaijan	1
Belgium	49
Bosnia and Herzegovina	3
Bulgaria	2
Croatia	22
Cyprus	2
Czech Republic	80
Denmark	35
Estonia	9
Finland	53
Former Yugoslav Republic of Macedonia	2
France	452
Georgia	3
Germany	482
Greece	24
Hungary	22
Iceland	3
Ireland	10
Italy	218
Kazakhstan	3
Kosovo	1
Kyrgyz Republic	3
Latvia	1
Luxembourg	3
Montenegro	2
Netherlands	141
Norway	19
Poland	58
Portugal	50
Romania	5
Russia	28
Serbia	4
Slovakia	4
Slovenia	3
Spain	174
Sweden	126
Switzerland	134
Tajikistan	1
United Kingdom	371
Uzbekistan	6

Country/Region	Number of Researchers
MIDDLE EAST	
Bahrain	2
Iran	3
Israel	9
Jordan	6
Kuwait	2
Oman	5
Qatar	7
Saudi Arabia	4
Turkey	54
United Arab Emirates	10
AFRICA	
Botswana	1
Cameroon	28
Cote d'Ivoire	2
Democratic Republic of the Congo	5
Egypt	8
Ethiopia	24
Gabon	2
Ghana	13
Guinea	3
Kenya	21
Liberia	1
Madagascar	5
Madagascar	5
Madagascar	2
Mauritania	2
Morocco	4
Namibia	9
Niger	1
Republic of Congo	5
Republic of South Africa	13
Rwanda	1
Senegal	2
Tanzania	42
Tunisia	1
Uganda	15
Zambia	5
OTHERS	
Others	1
Total	8,409



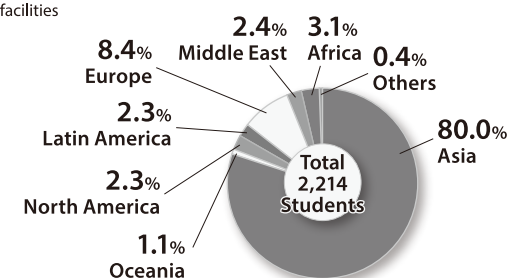
Students from Abroad

(As of May 1, 2017)

	Undergraduates		Graduate Students				Other*	Total
	Under-graduates	Non-Regular Students	Master's Course	Doctoral Course	Professional Course	Non-Regular Students	Non-Regular Students	
ASIA								
Bangladesh			5	20				25
Brunei		2		1				3
Cambodia			3	3		2		8
China (including HK and Macau)	115	61	362	323	49	73	18	1,001
India	2		3	27	2	2		36
Indonesia	10	7	32	51	6	6	4	116
Laos			2	2				4
Malaysia	1		10	31	2		2	46
Mongolia	5	1	2	4	1		1	14
Myanmar			9	20		2	2	33
Nepal			2	7				9
Pakistan				4		1	1	6
Philippines	1	1	7	7	2		1	19
Republic of Korea	64	10	45	70	21	10	8	228
Singapore		4	1	2	1	1		9
Sri Lanka			1	3				4
Taiwan	3	14	28	47	3	9		104
Thailand	7	3	17	23	1	2	5	58
Vietnam	6	1	6	28	2	3	2	48
OCEANIA								
Australia	2	6	1	2	1			12
Fiji			1			2		3
New Zealand		1	3	2	1			7
Papua New Guinea			1					1
Samoa						1		1
Solomon							1	1
NORTH AMERICA								
Canada	1	6	2	4			2	15
United States of America		8	10	13	1	3	1	36
LATIN AMERICA								
Argentina	1						1	2
Bolivia				1				1
Brazil	1		3	7		2	2	15
Chile				2			1	3
Colombia			1	2	1			4
Costa Rica			1					1
Dominica			1					1
Grenada			1					1
Haiti			1					1
Mexico		1	2	1	2		1	7
Panama				1				1
Paraguay				1				1
Peru			1	6		1	2	10
Uruguay			1	1				2
EUROPE								
Albania					1			1
Austria			1	1				2
Belarus				1				1
Belgium			2	1			1	4
Bulgaria	1			4				5
Croatia				1		1		2
Czech Republic							1	1
Estonia		1					1	2
Finland		1	1	3				5
Former Yugoslav Republic of Macedonia					1			1
France		11		10		14	6	41
Georgia				2				2
Germany		7	1	5	1	4		18
Greece			1					1
Hungary			2	3				5
Ireland			1	1		1		3
Italy		2	2	3		7		14
Kazakhstan	1			2			1	4
Kosovo							1	1
Kyrgyz Republic					2		1	3

	Undergraduates		Graduate Students				Other*	Total
	Under-graduates	Non-Regular Students	Master's Course	Doctoral Course	Professional Course	Non-Regular Students	Non-Regular Students	
Latvia		1						1
Luxembourg			1					1
Netherlands		1	1	1		1	1	5
Norway						3		3
Poland				1			2	3
Portugal				1				1
Romania		2		2				4
Russia	1	5	2	2	1	2	1	14
Slovakia		1						1
Slovenia	1	1						2
Spain		1	1	4				6
Sweden		4		1		1	1	7
Switzerland				3		2	1	6
Ukraine				2		1		3
United Kingdom		4	4	2		1	1	12
Uzbekistan				1				1
MIDDLE EAST								
Afghanistan			3	2		1		6
Iran			2	9	1		1	13
Israel		2	1	2				5
Kuwait				1		1		2
Lebanon				3				3
Oman				2	1			3
Palestine		2	1	3				6
Turkey	1	2	1	7	1	1	3	16
AFRICA								
Angola							1	1
Benin			1					1
Botswana			1					1
Burkina Faso			1					1
Cameroon			2	1				3
Cote d'Ivoire							1	1
Democratic Republic of the Congo				3			1	4
Egypt	5		3	8				16
Ethiopia				2				2
Guinea				2	1			3
Kenya			2	5				7
Liberia						1		1
Libya				3				3
Madagascar				1				1
Malawi			1					1
Mauritania							1	1
Morocco			1					1
Mozambique				1				1
Nigeria			2	2			1	5
Republic of South Africa			1	1				2
Senegal							1	1
Sudan		1	2	1				4
Tanzania			1	1				2
Tunisia				1				1
Uganda			2	1		1		4
Others								
Others		8				1		9
Total	229	183	613	835	106	165	83	2,214

*Research centers and other academic facilities

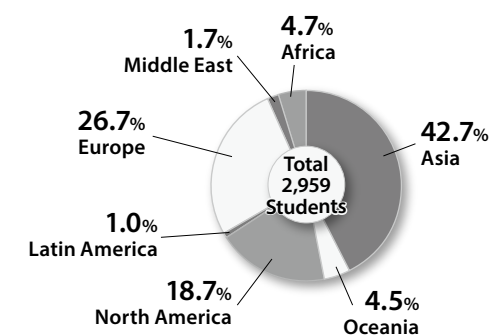


Students going Abroad

Academic Year 2016 (Apr. 1- Mar. 31)

	Under-graduates	Master's Course	Doctoral Course	Professional Course	Non-Regular Students	Total
ASIA						
Bangladesh		1	6			7
Bhutan	8			1		9
Brunei			1			1
Cambodia	3	4	9			16
China (including HK and Macau)	48	95	98	2		243
India	6	7	39	1	1	54
Indonesia	9	33	65			107
Laos	1	5	4			10
Malaysia	9	20	48	1	1	79
Mongolia	2	3	7			12
Myanmar	12	13	38			63
Nepal	2	6	25			33
Pakistan		1	2			3
Philippines	9	11	22	10	1	53
Republic of Korea	27	47	54		1	129
Singapore	16	13	9	12		50
Sri Lanka		11	8			19
Taiwan	18	36	53		1	108
Thailand	53	71	47	2	6	179
Timor-Leste			1			1
Vietnam	25	19	41	2		87
OCEANIA						
Australia	29	17	25	5		76
Fiji	2	1	3	1		7
Marshall		1				1
New Zealand	25	13	5	1		44
Papua New Guinea	1		1			2
Samoa		1				1
Tonga	1					1
Vanuatu		1				1
NORTH AMERICA						
Canada	21	11	22	2		56
United States of America	95	167	223	12		497
LATIN AMERICA						
Argentina			1			1
Brazil		3	4			7
Chile		2	8			10
Mexico	3	1	5			9
Peru		1	3			4
EUROPE						
Austria	1	13	17	3		34
Azerbaijan			1			1
Belgium	3	2	8	1		14
Croatia			4			4
Cyprus			1			1
Czech Republic		1	12			13
Denmark		5	8			13
Estonia	1	1				2
Finland	2	2	4			8
France	18	48	63	3	2	134
Georgia		2				2
Germany	26	34	58	9		127
Greece		9	7			16
Hungary		6	6			12
Iceland		1				1
Ireland	2	3	1			6
Italy	6	11	28			45
Kazakhstan		3	3			6
Lithuania			2			2
Luxembourg				3		3
Malta	1					1
Netherlands	8	1	21			30

	Under-graduates	Master's Course	Doctoral Course	Professional Course	Non-Regular Students	Total
Norway		3	1			4
Poland		3	23	1		27
Portugal		4	7	1		12
Russia	1	3	7			11
Serbia			1			1
Slovenia			3			3
Spain	3	10	14			27
Sweden	2	7	7			16
Switzerland	5	13	28		1	47
Ukraine		1				1
United Kingdom	62	35	63	3		163
Uzbekistan			2			2
MIDDLE EAST						
Afghanistan		2	1			3
Bahrain			1			1
Iran			6			6
Israel	4	3	6			13
Jordan			6			6
Oman		1	1			2
Turkey		2	16			18
United Arab Emirates			2			2
AFRICA						
Benin			3			3
Cameroon			7			7
Democratic Republic of the Congo		2	6			8
Egypt	1	1	2			4
Ethiopia	1	3	2			6
Gabon		3	1			4
Ghana	2		1			3
Guinea	1		1			2
Kenya	2	3	8			13
Madagascar			2			2
Morocco			1			1
Mozambique			1			1
Namibia	3	4	2			9
Nigeria		2	1			3
Republic of South Africa		3	3			6
Rwanda			2			2
Senegal			4			4
Sudan		1				1
Tanzania		5	28			33
Uganda	4	1	18			23
Zambia		1	2			3
Zimbabwe			1			1
Total	584	873	1,412	76	14	2,959





KYOTO UNIVERSITY

www.kyoto-u.ac.jp/en

CONTACT

For Researchers

International Affairs Division

Yoshida-Honmachi, Sakyo-ku, Kyoto 606-8501

Tel: +81-75-753-2047

E-mail: [ipromo\[at\]mail2.adm.kyoto-u.ac.jp](mailto:ipromo[at]mail2.adm.kyoto-u.ac.jp)

URL: www.oc.kyoto-u.ac.jp/en/

For Students

International Education and Student Mobility Division

Yoshida-Honmachi, Sakyo-ku, Kyoto 606-8501

Tel: +81-75-753-2543

E-mail: [ryugak78\[at\]mail.adm.kyoto-u.ac.jp](mailto:ryugak78[at]mail.adm.kyoto-u.ac.jp)

URL: www.kyoto-u.ac.jp/en/education-campus/